

Aug. 8. 1883

014155

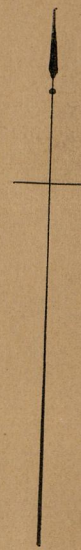
PLAT OF

FRANK STREET

FROM PRAIRIE AVE. TO BEACON ST.

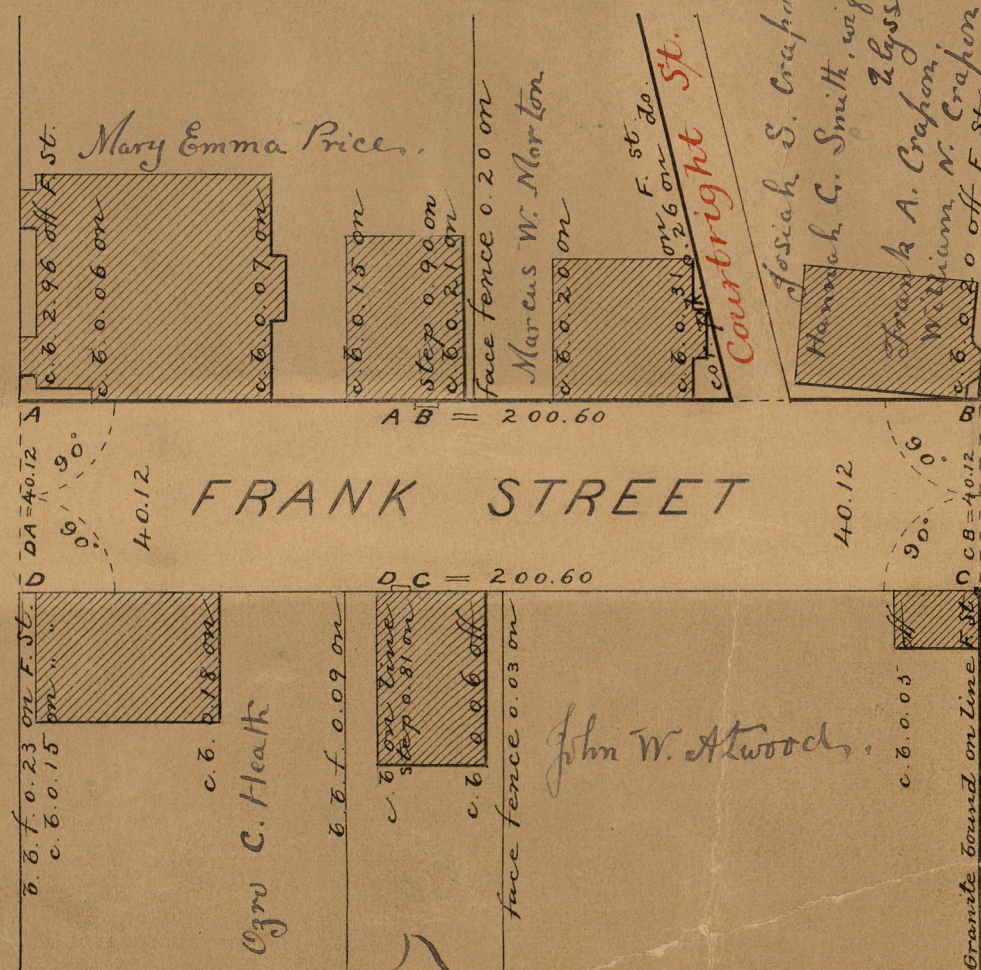
SCALE 40 FEET PER INCH.

Providence R.I.
This plat accompanies
our report of this date.



PROVIDENCE ST.

PRAIRIE AVENUE



STREET

Beacon Ave.
BEACON STREET

OFFICE No.	9751
DRAWER	83
SHEET	A-100

Albie J. Butler
Clara C. Haselden, wife of Charles E.
Seraphine E. Hodges, wife of John